



FIRST TIME INSTALLATION

* REMOVE PARTS FROM INSIDE THE PACKAGE AND CHECK THEM ALL

* CONTACT YOUR DEALER IF ANY PART IS MISSING OR DAMAGED

* USE THE EQUIPMENT SPECIFIED FOR INSTALLATION

ASSEMBLY INSTRUCTIONS (ROOF RACK)

Product Code: MC01006

COMPATIBLE VEHICLES

CTRN C4 GPCSSO MPV 14-

PACKAGE INCLUDED

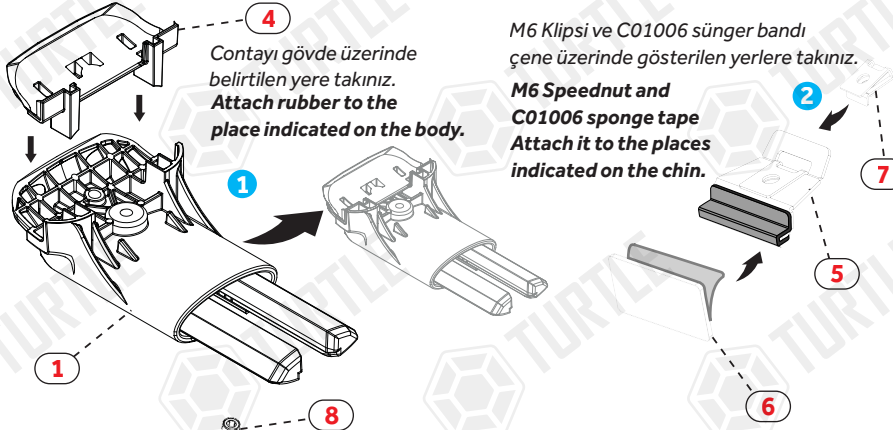
1- TURTLE AIR1 CHASSIS	4
2- NO 5. ALLEN WRENCH	1
3- CLOTH KEYCHAIN	1
4- TURTLE AIR1 UPPER RUBBER	4
5- Y1006 CHIN	4
6- C01006 SPONGE TAPE	4
7- M6 SPEED NUT	4
8- M6x30 INBUS BOLT	4
9- M6 1/2 WASHER	4

ZIPLOCK BAG

4 Contayı gövde üzerinde belirtilen yere takınız. Attach rubber to the place indicated on the body.

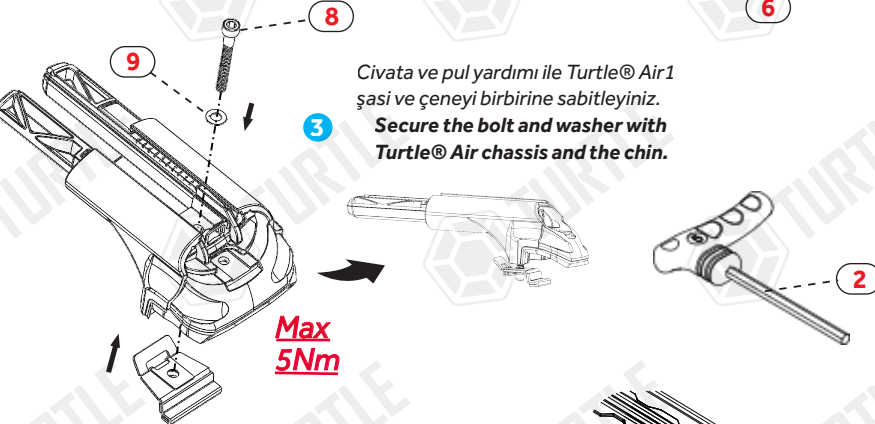
M6 Klipsi ve C01006 sünger bandı çene üzerinde gösterilen yerlere takınız.

M6 Speednut and C01006 sponge tape Attach it to the places indicated on the chin.

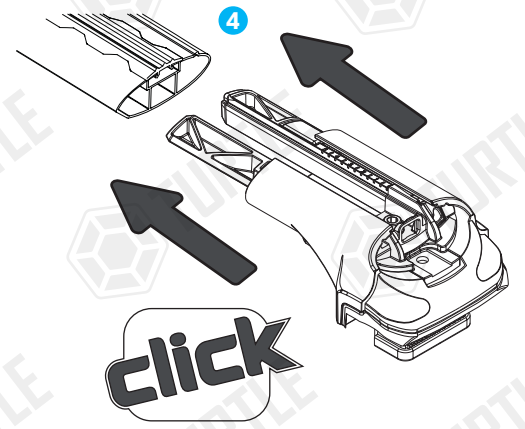


3 Civata ve pul yardımı ile Turtle® Air1 şasi ve çeneyi birbirine sabitleyiniz. Secure the bolt and washer with Turtle® Air chassis and the chin.

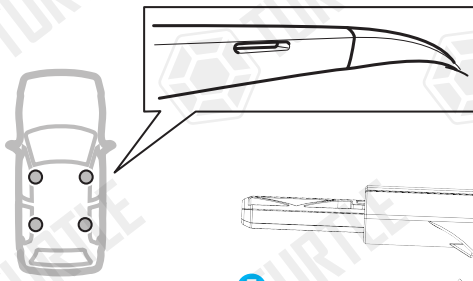
Max 5Nm



Air şasi kitlerini profile takınız. Attach Air chassis kits to the profile.



click

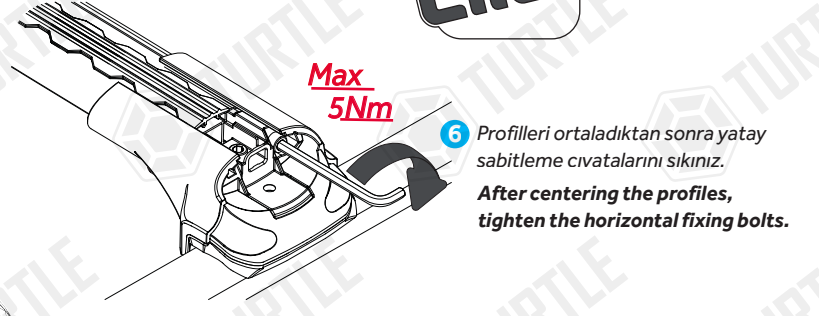


Ürünü araç üzerinde belirlenen kısma yerleştiriniz. Alyan anahtar yardımıyla civatayı sıkarak çeneyi tavan çitasına sabitleyiniz.

Place the bars in the desired location of the vehicle. Using an Allen key, tighten the clamp to secure the bar to the roof rails.

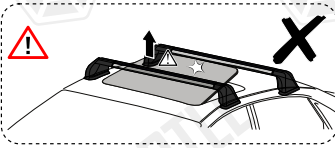
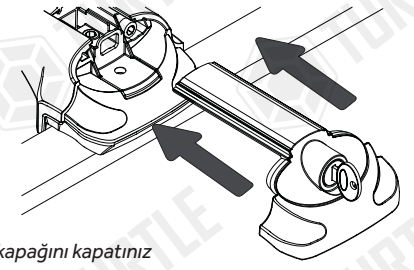
Max 5Nm

6 Profilleri ortaldıktan sonra yatay sabitleme civatalarını sıkınız. After centering the profiles, tighten the horizontal fixing bolts.



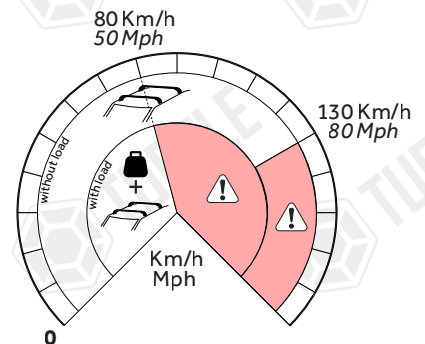
7

Turtle® Air-1 kapağını kapatınız ve kilitleyiniz. Close the Turtle® Air-1's cap and lock.



Max. Load 75 kg

LONG FOR FRONT
SHORT FOR REAR



* Kullanım amacı: Aracın bagajı yeterli olmadığı durumlarda araç tavanında yük ve eşya taşımak.

* Purpose of usage: Carrying cargo and goods on the vehicle's roof when the vehicle's trunk is not sufficient.