



## FIRST TIME INSTALLATION

- \* REMOVE PARTS FROM INSIDE THE PACKAGE AND CHECK THEM ALL
- \* CONTACT YOUR DEALER IF ANY PART IS MISSING OR DAMAGED
- \* USE THE EQUIPMENT SPECIFIED FOR INSTALLATION

### ASSEMBLY INSTRUCTIONS (ROOF RACK)

Product Code: MC02005

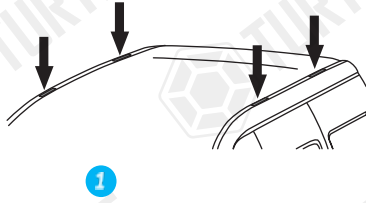
### COMPATIBLE VEHICLES

HND CRV (Mk2) SUV 02-06

### PACKAGE INCLUDED

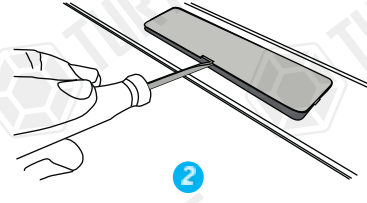
1- TURTLE AIR 2 CHASSIS	4
2- NO.5 ALLEN WRENCH	1
3- CLOTH KEYCHAIN	1
4- C10	4
5- M6x35 INBUS BOLT	4
6- M6 1/2 WASHER	4
7- M6 SPEEDNUT	4
8- M6x15 INBUS BOLT	12
9- M6 WASHER	12

ZIPLOCK BAG



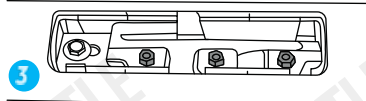
Turtle® şekildeki gösterilen kapakların altına monte edilecektir.

**Turtle® will mount below of the caps as seen on the picture.**



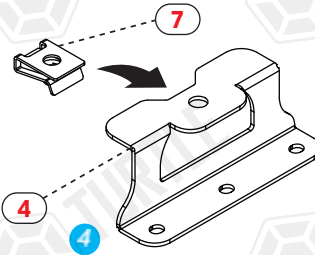
Kapakları uygun bir alet yardımı ile yerinden çıkarınız.

**Remove the caps with a suitable tool.**



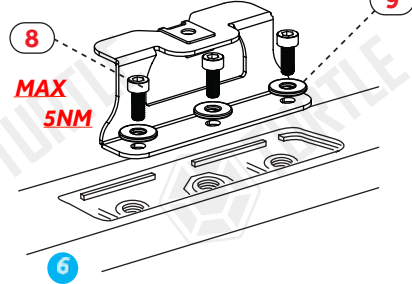
Şekilde görülen üç adet civata deliğine metal monte edilecektir.

**Metal bracket will mount on three screw hole placed on the roof.**



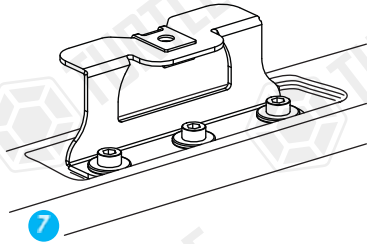
Klipsi metal demirin üst kısmına yerleştiriniz.

**Place the clips top of the metal bracket.**



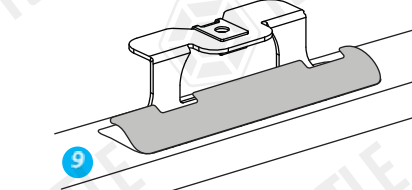
Civataları, pullar ile birlikte yerine yerleştirin ve sıkınız.

**Place the bolts with washers and tight them.**



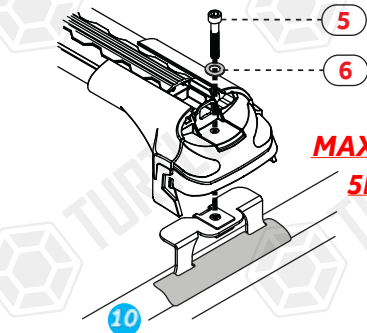
Metal demirin sağlamlığından ve iyice sıkıldığından emin olunuz.

**Be sure about metal bracket placed correctly and tightened enough.**



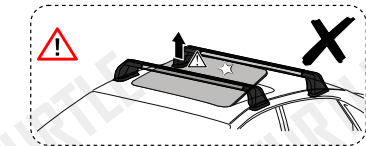
Kapağı yerine yerleştirin ve tamamen kapandığından emin olunuz.

**Place the cap and be sure it is placed correctly.**



Turtle®'ı metal üzerine yerleştirin, civata ve pul ile sıkınız.

**Mount the Turtle® on the metal bracket with bolt and washer.**



Max. Load  
75 kg

\* Kullanım amacı; Aracın bagajı yeterli olmadığı durumlarda araç tavanında yük ve eşya taşımak.

\* Purpose of usage; Carrying cargo and goods on the vehicle's roof when the vehicle's trunk is not sufficient.

