



FIRST TIME INSTALLATION

- * REMOVE PARTS FROM INSIDE THE PACKAGE AND CHECK THEM ALL
- * CONTACT YOUR DEALER IF ANY PART IS MISSING OR DAMAGED
- * USE THE EQUIPMENT SPECIFIED FOR INSTALLATION

ASSEMBLY INSTRUCTIONS (ROOF RACK)

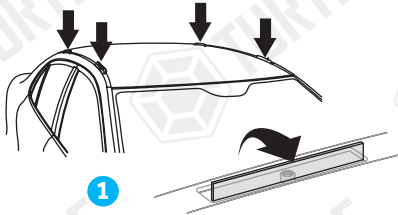
Product Code: MC03003 (Turtle Air3 Kit)

COMPATIBLE VEHICLES

BMW GROUP

PACKAGE INCLUDED

1-	TURTLE AIR 3 CHASSIS	4
2-	5 MM ALLEN KEY	1
3-	CLOTH KEYCHAIN	1
4-	C2	4
5-	3003 PLASTIC PIECE	4
6-	M6 SPEEDNUT	4
7-	M6x30 INBUS BOLT	4
8-	D6 1/2 WASHER	4
9-	M6x40 INBUS BOLT	4
10-	M7x35 HEX BOLT	4
11-	M7x40 HEX BOLT	4
12-	M7x60 HEX BOLT	4
13-	D6 WASHER	4
14-	D7 WASHER	4
15-	10-11 WRENCH	1

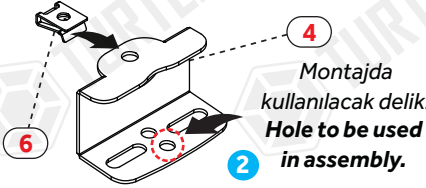


1
Araç tavanındaki kapakları açınız.
Open the covers on the vehicle roof.

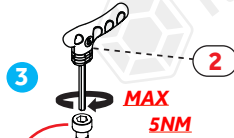
Montaja geçmeden (boya ve pislikleri temizlemek için) aracınıza uygun olan civatayı bağlantı yerinde bir defa boşta sıkıp tekrar çıkarınız.

Before the installation (to remove paint and dirt)
Tighten the bolt that is suitable for your vehicle once in the connection area and remove it again.

- | | | |
|-----------|---------------------------------|--|
| 9 | → 3/F30 (12-19) M6*40 INBUS | |
| 10 | → 5/F10 (10-17) M7*35 HEX (AKB) | |
| 11 | → 1/F40 (19 -) M7*40 HEX (AKB) | |
| | 3/G20 (19+) M7*40 HEX (AKB) | |
| 12 | → 5/G30 (18+) M7*60 HEX (AKB) | |

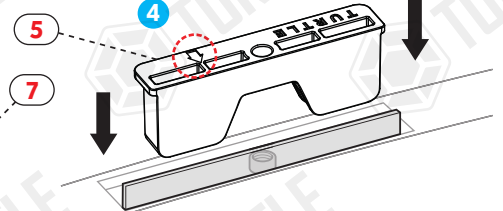


2
M6 klipsi metal parçaya belirtilen yere takınız.
Attach the M6 clip to the place indicated on the metal part.

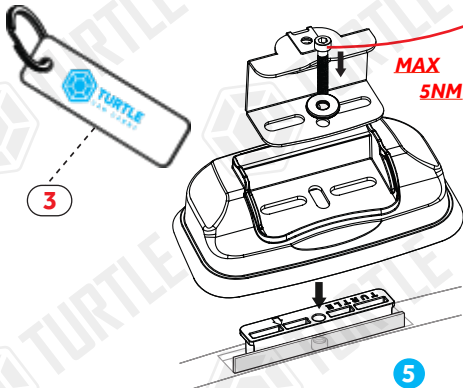


3
MAX 5NM

Plastik parçayı üzerindeki ok size dönük olacak şekilde yuvaya yerleştiriniz.
Place the plastic piece in the socket with the arrow on it facing you.

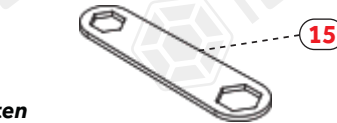


5
Air3 şasi kitlerini profile takınız.
Attach Air3 chassis kits to the profile.

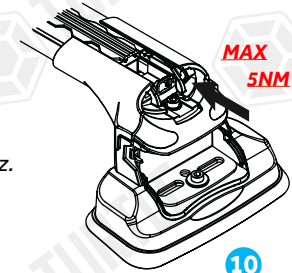


6
Conta ve metal parçayı belirtildiği şekilde yerleştirip aracınıza uyumlu civatayı kullanarak sıkınız.
Place the rubber and metal part as specified and tighten using bolt that are compatible with your vehicle.

7
M6x30 inbus civata ve küçük pulu Air3 şasi üzerinde ilgili yere yerleştiriniz.
Place the M6x30 inbus bolt and small washer on the Air3 chassis in the place specified.

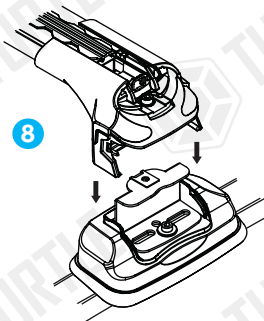


8
Pul ve civata kullanarak ara atkılarını sabitleyiniz.
Fasten roof racks using washers and bolts.



9
Profilleri ortaldıktan sonra yatay sabitleme civatalarını sıkınız.
After centering the profiles, tighten the horizontal fixing bolts.

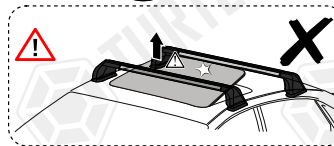
10
Turtle® ara atkılarını araç tavanına yerleştirip metal aparatlara sabitleyiniz.
Place Turtle® roof racks on the vehicle roof and fix them to the metal apparatus.



11
Max. Load 75kg

* Kullanım amacı; Aracın bagajı yeterli olmadığı durumlarda araç tavanında yük ve eşya taşımak.

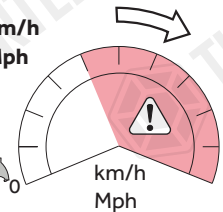
* Purpose of usage; Carrying cargo and goods on the vehicle's roof when the vehicle's trunk is not sufficient.



LONG FOR FRONT

SHORT FOR REAR

80 km/h
50 Mph



MC03003 / Rev:07 / 09.06.2023 (ECE)