



FIRST TIME INSTALLATION

- * REMOVE PARTS FROM INSIDE THE PACKAGE AND CHECK THEM ALL
- * CONTACT YOUR DEALER IF ANY PART IS MISSING OR DAMAGED
- * USE THE EQUIPMENT SPECIFIED FOR INSTALLATION

ASSEMBLY INSTRUCTIONS (ROOF RACK)

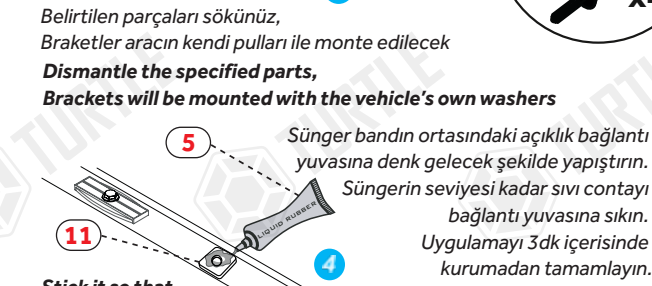
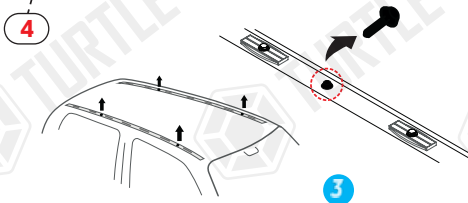
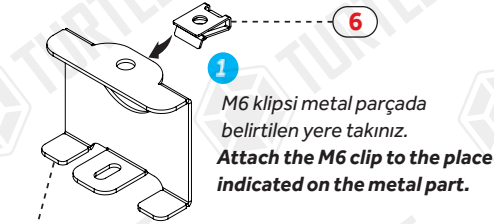
Product Code: MC03012 (Turtle Air3 Kit)

COMPATIBLE VEHICLES

FRD B-MX (B232) MPV 12-17

PACKAGE INCLUDED

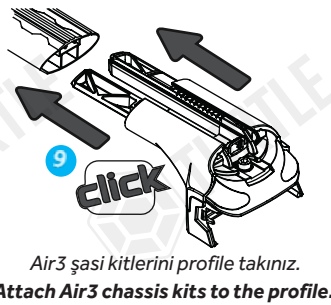
1- TURTLE AIR 3 CHASSIS	4
2- 5 MM ALLEN KEY	1
3- CLOTH KEYCHAIN	1
4- C5	4
5- LIQUID RUBBER	1
6- M6 SPEEDNUT (KLIPS)	4
7- M6x30 INBUS BOLT (CIVATA)	4
8- D6 1/2 WASHER (PUL)	4
9- M6x15 INBUS BOLT (CIVATA)	4
10- D6 WASHER (PUL)	4
11- SPONGE TAPE	4



Stick it so that the opening in the middle of the sponge tape coincides with the connection slot. Squeeze the gasket to the connection socket up to the level of the sponge. Complete the application within 3 minutes before it dries.



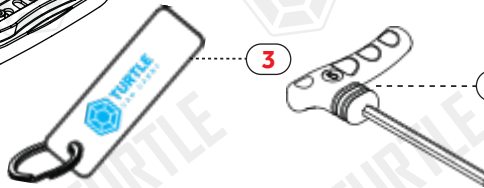
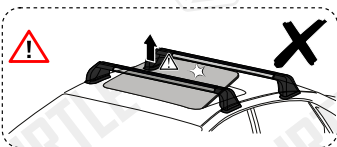
2. aşamada çıkardığınız plastikleri yerine takınız.
Reattach the plastics you removed in step 2.



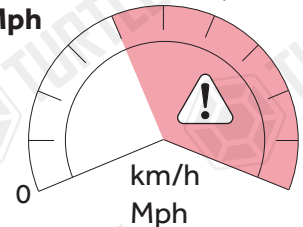
Turtle® ara atkılarını araç tavanına yerleştirip metal aparatlara sabitleyiniz.
Place Turtle® roof racks on the vehicle roof and fix them to the metal apparatus.

11 Pul ve civata kullanarak ara atkılarını sabitleyiniz.
Fasten roof racks using washers and bolts.

12 Profilleri ortaldıktan sonra yatay sabitleme civatalarını sıkınız.
After centering the profiles, tighten the horizontal fixing bolts.



80 km/h
50 Mph



Max. Load
75kg

LONG FOR FRONT
SHORT FOR REAR

* Kullanım amacı; Aracın bagajı yeterli olmadığı durumlarda araç tavanında yük ve eşya taşımak.
* Purpose of usage; Carrying cargo and goods on the vehicle's roof when the vehicle's trunk is not sufficient.