

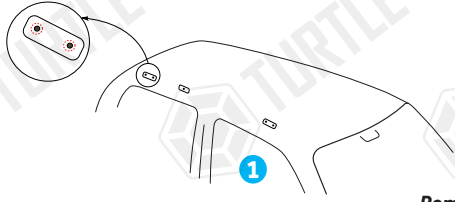


FIRST TIME INSTALLATION

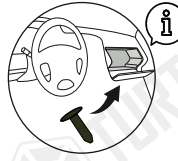
- * REMOVE PARTS FROM INSIDE THE PACKAGE AND CHECK THEM ALL
- * CONTACT YOUR DEALER IF ANY PART IS MISSING OR DAMAGED
- * USE THE EQUIPMENT SPECIFIED FOR INSTALLATION

ASSEMBLY INSTRUCTIONS (ROOF RACK)

Product Code: MC03014 (Turtle Air3 Kit)



Belirtilen parçaları sökünüz ve saklayınız.
Remove and keep the specified parts.



Turtle Air3 ürününüzü montaj yapmak istediğiniz yere göre (Ön-Orta, Ön-Arka, Orta-Arka) plastikleri sökünüz.
Remove the plastics according to where you want to mount your Turtle Air3 (Front-Middle, Front-Back, Middle-Back).

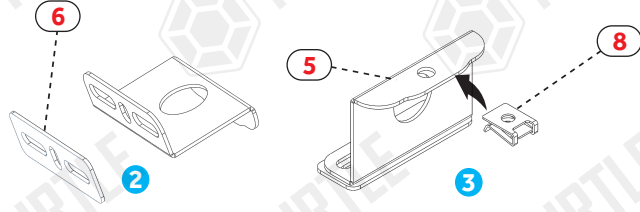
PACKAGE INCLUDED

1-	3001 CHASSIS	4
2-	NO 5 ALLEN WRENCH	1
3-	CLOTH KEYCHAIN	1
4-	C7	4
5-	C6	2
6-	C03013 SPONGE BAND	4
7-	6x15 FLANGED BUTTON HEAD BOLT	8
8-	M6 SPEEDNUT	4
9-	M6x30 INBUS BOLT	4
10-	M6 1/2 WASHER	4
11-	M6 WASHER	2
12-	NO 4 ALLEN WRENCH	1

ZIPLOCK BAG

C6 Bracket Montajı (Orta bağlantı için kullanılacaktır.)

C6 Bracket Installation (It will be used for the middle connection.)

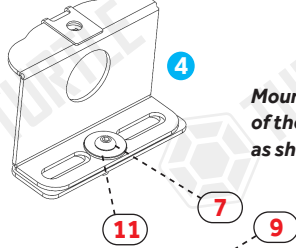


C03013 süngeri bracketlere şekildeki gibi yapıştırınız
Stick the C03013 sponge to the brackets as shown in the figure.

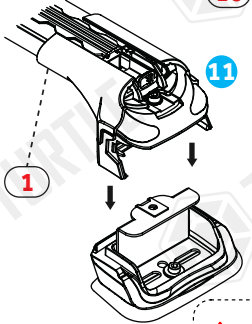
M6 klipsi metal parçada belirtilen yere takınız.
Attach the M6 clip to the place indicated on the metal part.

Metal bracketi şekilde gösterildiği gibi aracın tavanına civata kullanarak monte ediniz.

Mount the metal bracket to the roof of the vehicle using bolts as shown in the figure.

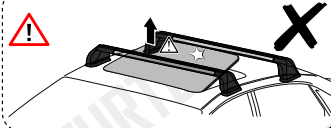


M6x30 inbus civata ve küçük pulu Air3 şasi üzerinde ilgili yere yerleştiriniz
Place the M6x30 inbus bolt and small washer on the Air3 chassis in the place specified



Turtle® ara atıkları araç tavanına yerleştirip metal aparatlara sabitleyiniz.

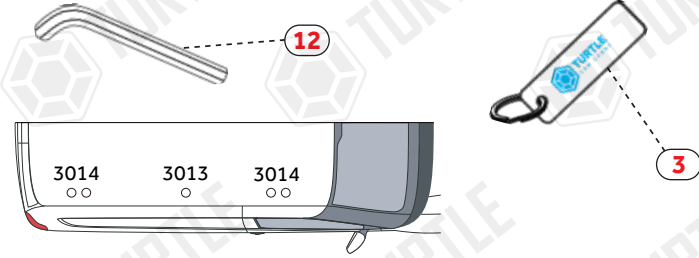
Place Turtle® roof racks on the vehicle roof and fix them to the metal apparatus.



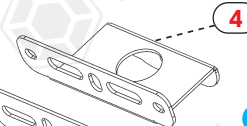
Pul ve civata kullanarak ara atıkları sabitleyiniz.
Fasten roof racks using washers and bolts



* Kullanım amacı; Aracın bagajı yeterli olmadığı durumlarda araç tavanında yük ve eşya taşımak.
* Purpose of usage; Carrying cargo and goods on the vehicle's roof when the vehicle's trunk is not sufficient.

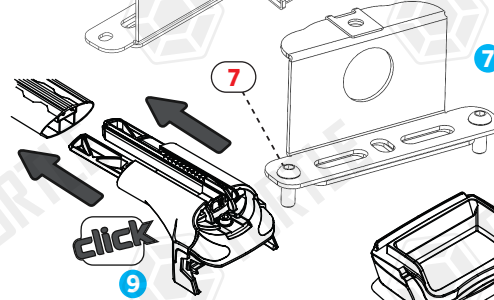


C7 Bracket Installation (It will be used for the front and rear connection.)



C03013 süngeri bracketlere şekildeki gibi yapıştırınız
Stick the C03013 sponge to the brackets as shown in the figure.

M6 klipsi metal parçada belirtilen yere takınız.
Attach the M6 clip to the place indicated on the metal part.



Metal bracketi şekilde gösterildiği gibi aracın tavanına civata kullanarak monte ediniz.

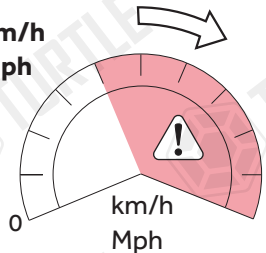
Mount the metal bracket to the roof of the vehicle using bolts as shown in the figure.

Contayı gösterildiği şekilde metal parçanın üzerinden geçirip tavana yerleştiriniz.

Pass the rubber over the metal bracket as shown and place vehicle's roof.

Profilleri ortaldıktan sonra yatay sabitleme civatalarını sıkınız
After centering the profiles, tighten the horizontal fixing bolts

80 km/h
50 Mph



MC03014 / Rev.02 / 12.06.2023 (ECE)