



FIRST TIME INSTALLATION

- * REMOVE PARTS FROM INSIDE THE PACKAGE AND CHECK THEM ALL
- * CONTACT YOUR DEALER IF ANY PART IS MISSING OR DAMAGED
- * USE THE EQUIPMENT SPECIFIED FOR INSTALLATION

ASSEMBLY INSTRUCTIONS (ROOF RAIL)

Product Code: MR01057 (Crown)

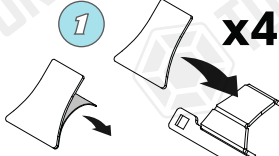
COMPATIBLE VEHICLES

REN CPTR (J87) SUV 13-19
REN KPTR (HA) SUV 16-19

PACKAGE INCLUDED

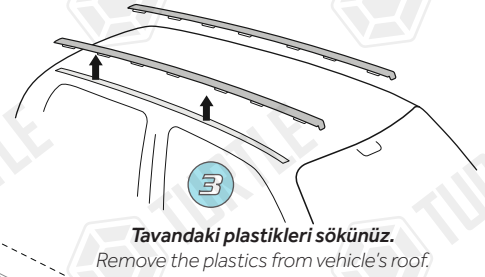
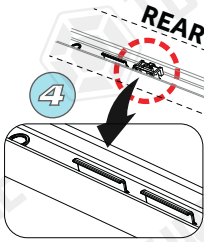
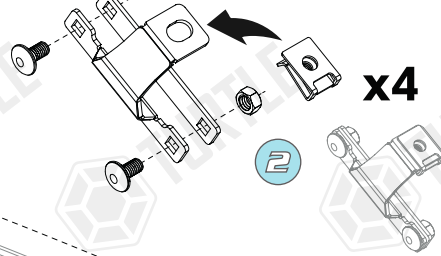
1- CROWN STOPPLE	4
2- M6x25 INBUS BOLT (5Nm)	4
3- D6 WASHER	4
4- M6 SPEED NUT	4
5- M6x12 LOCK HEADED BOLT(5Nm)	8
6- M6 HEX NUT	8
7- 1057-1S SPONGE BAND	4
8- 5mm ALLEN KEY	1
9- 10-13 WRENCH	1
10- YMT-R01057-1B (BRACKET)	4
11- YMT-R01057-2K (BRACKET)	4
12- LIQUID RUBBER	1

ZIPLOCK BAG



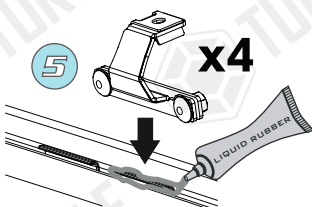
Sünger bandı metal parçaya yapıştırınız.
Stick the sponge band to the metal part.

Şekilde gösterilen aşamalara göre bağlantı parçalarını hazırlayınız.
Prepare the brackets according to the steps shown in the figure.



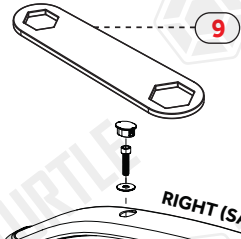
Tavandaki plastikleri sökünüz.
Remove the plastics from vehicle's roof.

Her iki taraf için de
For both sides



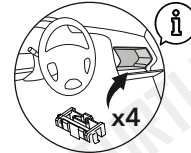
Sabitleme civatalarını sıkınız.
Tighten the horizontal fixing bolts.

Parçayı tavana gösterildiği şekilde monte ediniz. Kavramayı artırmak ve titreme sesini engellemek için bağlantı noktalarına sıvı conta uygulayınız.
Mount the part on the vehicle's roof as shown. Apply liquid sealant to the attachment points to increase grip and prevent vibration noise.

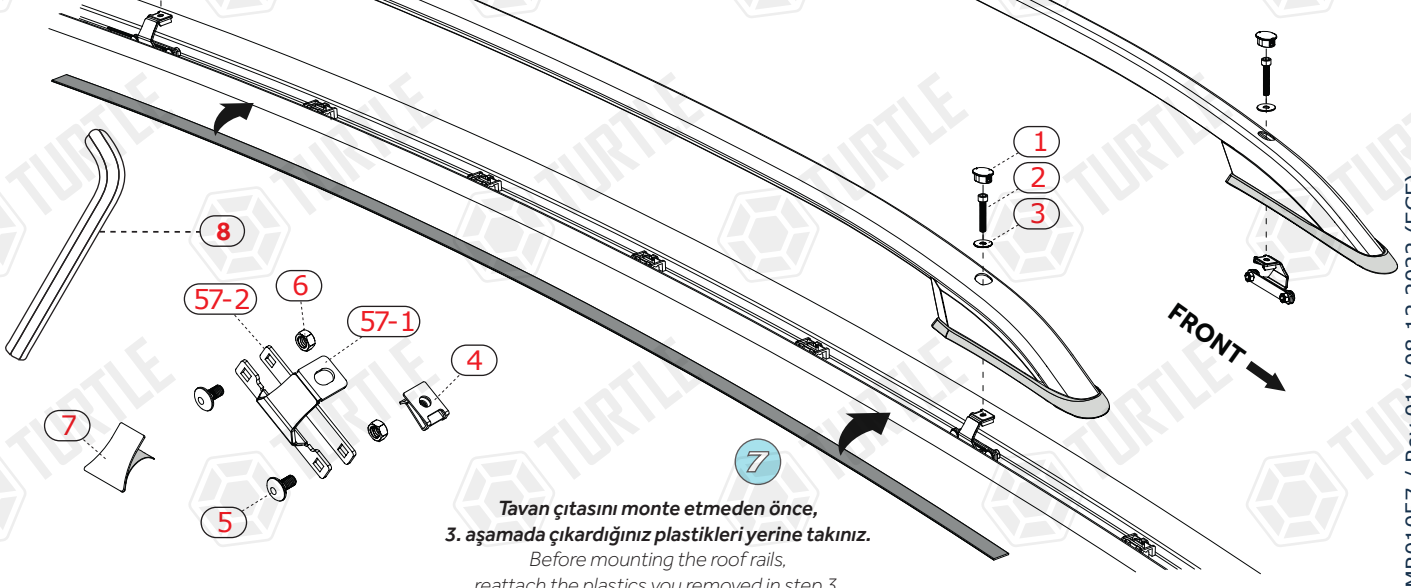


LEFT (SOL)

RIGHT (SAĞ)



Belirtilen parçaları sökünüz ve saklayınız.
Remove and keep the specified parts.



Tavan çitasını monte etmeden önce,
3. aşamada çıkardığınız plastikleri yerine takınız.
Before mounting the roof rails,
reattach the plastics you removed in step 3.

MR01057 / Rev.01 / 08.12.2022 (ECE)