



FIRST TIME INSTALLATION

- * REMOVE PARTS FROM INSIDE THE PACKAGE AND CHECK THEM ALL
- * CONTACT YOUR DEALER IF ANY PART IS MISSING OR DAMAGED
- * USE THE EQUIPMENT SPECIFIED FOR INSTALLATION

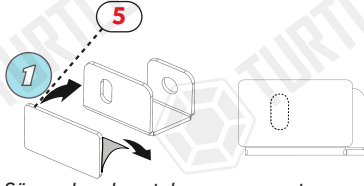
ASSEMBLY INSTRUCTIONS (ROOF RAIL) Product Code: MR01075 (Crown)

COMPATIBLE VEHICLES FRD ECSPT SUV 13-

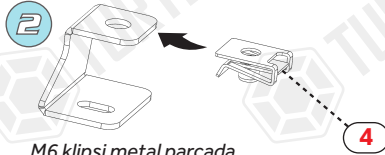
PACKAGE INCLUDED

1- CROWN STOPPLE	4
2- M6x30 INBUS BOLT (5Nm)	4
3- D6 WASHER	4
4- M6 SPEED NUT	4
5- C01006 SPONGE BAND	4
6- 5 mm ALLEN WRENCH	1
7- 10-13 WRENCH	1
8- YMT-R01020L-CO (BRACKET)	2
9- YMT-R01020R-CO (BRACKET)	2
10- LIQUID RUBBER	1

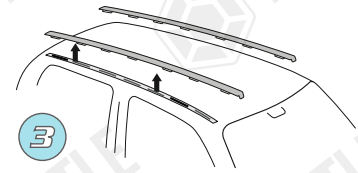
* Car's Own Bolt (Aracın Kendi Civatası)



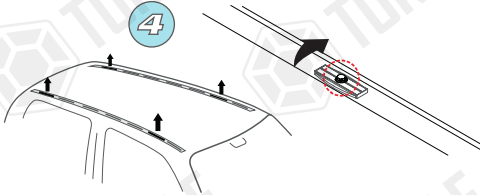
Sünger bandı metal parçaya yapıştırınız ve civata deliğine denk gelen kısmı kesiniz.
Stick the sponge tape to the metal part and cut the place corresponding to the bolt hole.



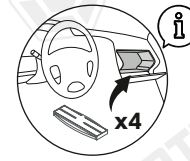
M6 klipsi metal parçaya belirtilen yere takınız.
Attach the M6 clip to the place indicated on the metal part.



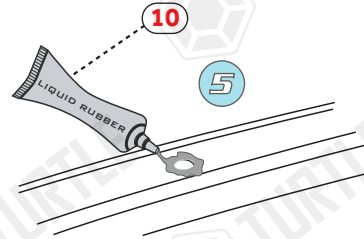
Tavandaki plastikleri sökünüz.
Remove the plastics from vehicle's roof.



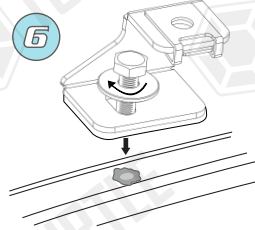
Belirtilen parçaları sökünüz,
Bracketler aracın kendi civataları ile monte edilecek.
**Dismantle the specified parts,
Brackets will be mounted with the vehicle's own bolts**



Belirtilen parçaları sökünüz ve saklayınız.
Remove and keep the specified parts.

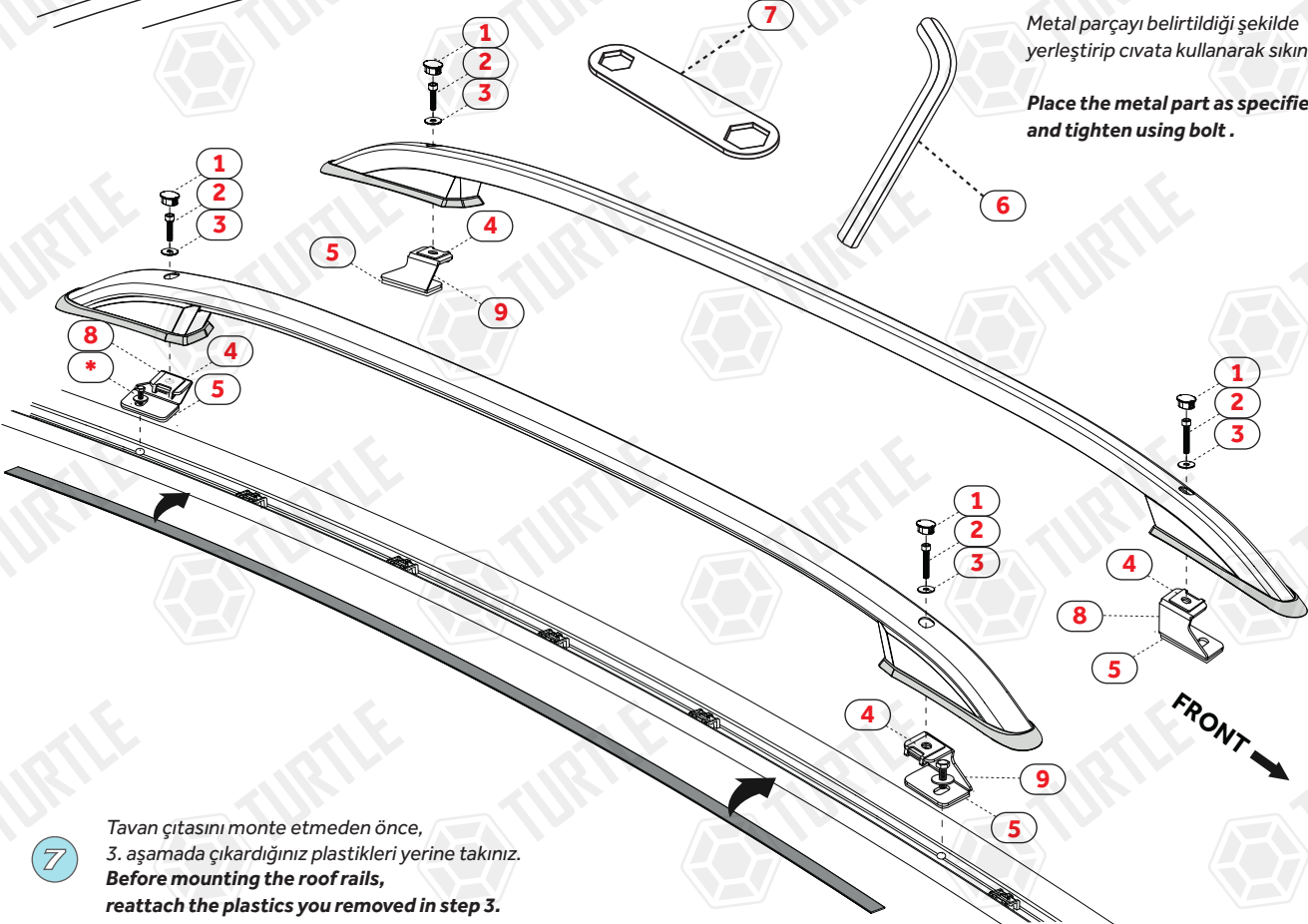


Yalıtım için silikonu yuvanın etrafına bol miktardan sıkınız.
Uygulamayı 3dk içerisinde kurumadan tamamlayınız.
**Apply a thick layer of silicone around the hole for insulation.
Apply in 3min before silicone dry.**



Metal parçayı belirttiği şekilde yerleştirip civata kullanarak sıkınız.

Place the metal part as specified and tighten using bolt.



Tavan çitasını monte etmeden önce,
3. aşamada çıkardığınız plastikleri yerine takınız.
**Before mounting the roof rails,
reattach the plastics you removed in step 3.**

MR01075 / Rev.03 / 08.12.2022 (ECE)